

Disassembly

1. Place Top Sub of tool in vice and remove Bottom Sub.
2. Remove Drag Springs.
3. Remove Pipe Plug(s) for Lower Cone. On 5.5" TACs also remove Pipe Plug(s) for Upper Cone.
4. Unscrew Lower Cone and Lower Cone Sleeve from Body.
5. Remove cap screw(s).
6. Unscrew cap from housing.
7. Slide Housing and Slips off bottom end of Body. To prevent breaking the slip springs, spin housing in a clockwise motion once they come in contact with the lower threads on the body.
8. Remove Body Nut Screw and unscrew Body Nut from Body.
9. Unscrew Upper Cone from Body.
10. Unscrew body from top sub.

Assembly

NOTE: All threads, including screws, plugs, and body threads, need to be properly lubricated prior to installation.

1. Stand body on work bench with upper threads, (the longer of the two on body), on top. Grease upper threads of body heavily with appropriate grease.
2. Make up Upper Cone onto Body
3. Make up Body Nut onto Body so that the top of the body nut is flush or slightly below the top thread
4. Check engagement of Pin on Body Nut with Pin on Upper Cone. Ensure pins make solid contact with each other with no binding.
5. Screw in body nut screw to body nut, securing it to the body. Slide cap onto body nut.
6. Place top flow deflector (sub) in vice. Grease top threads of body with appropriate grease for 10 rd threads, and make up body into top flow deflector hand tight.
7. Grease heavily the lower threads of body and middle portion of body where slips will ride.
8. Check Slip Springs to ensure they are attached properly to Slips. Slightly crimp end of springs.

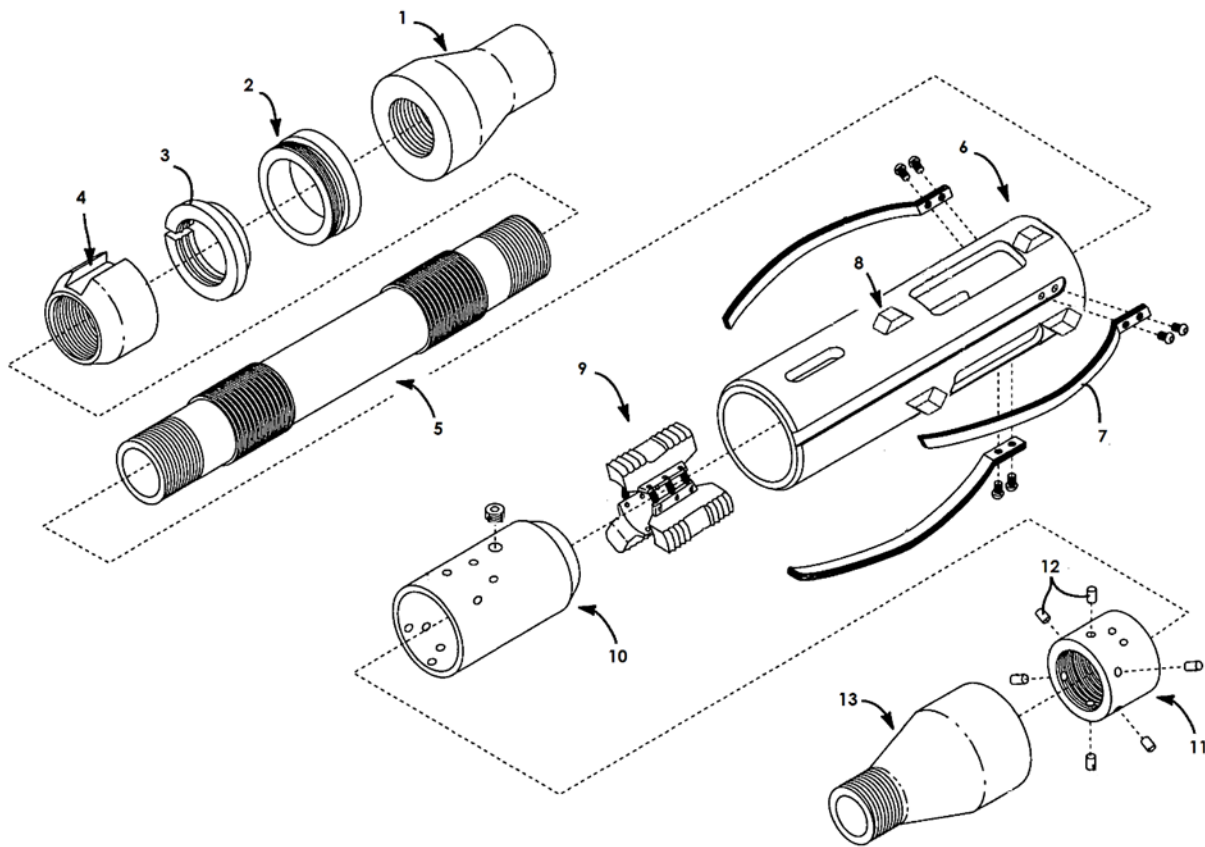
9. Place Slip Spring Sub Assembly into Housing by collapsing all three slips onto one another (*one wing under, one wing over*). Insert through the end of the housing. Lightly bounce the housing on a table or ground until slips fall into place in the slip windows.
10. Slide slips and housing over the body, making sure that you twist and push slips over the lower threads of body instead of jamming slips over threads in order to avoid spring breakage.

NOTE: After sliding Slips and Housing onto Body, check Slip Springs again to ensure all are still properly connected

11. Make up cap on housing and install cap screw(s).
12. Grease lower cone sleeve where the shear pins will sit. (grease helps them stay in place).
13. Slide lower cone sleeve into lower cone, line up holes, and install desired amount of shear pins as equally as possible into lower cone sleeve.
NOTE: Each shear pin takes 5000 lbs of tension to shear. E.g. 50k shear would be 10 pins.
14. Make up lower cone with threads on body making sure that shear pins do not fall out.
15. Check that the Upper cone is bottomed out (upper cone pin is in contact with body nut pin).
16. Make up Pipe Plug(s) into Lower Cone (and upper cone on 5.5").

NOTE: Pin in Upper Cone must be in contact with Pin in Body Nut when installing Pipe Plugs in Cones. The Pipe Plugs in Lower Cone should be roughly 1/8-1/4" from the end of the slot when Top Cone is bottomed out. Should be equal space for upper cone as well.

17. Actuate tool to make sure Slips will come out and everything turns smoothly. Make sure that there is no obstruction in the setting process.
18. Install drag springs using appropriate screws/washers
19. Make up Bottom Sub onto Body and tighten through tool.



Slimline Tubing Anchor Catcher parts list:

1. Top Flow Deflector/Top Sub
2. Cap
3. Body Nut
4. Upper Cone
5. Body/Mandrel
6. Housing/Cage
7. Drag Spring
8. Slip protector
9. Slip Spring Sub Assembly
10. Lower Cone
11. Lower Cone Sleeve
12. Shear Pins (5000 lb. shear per pin)
13. Bottom Flow Deflector/Bottom Sub